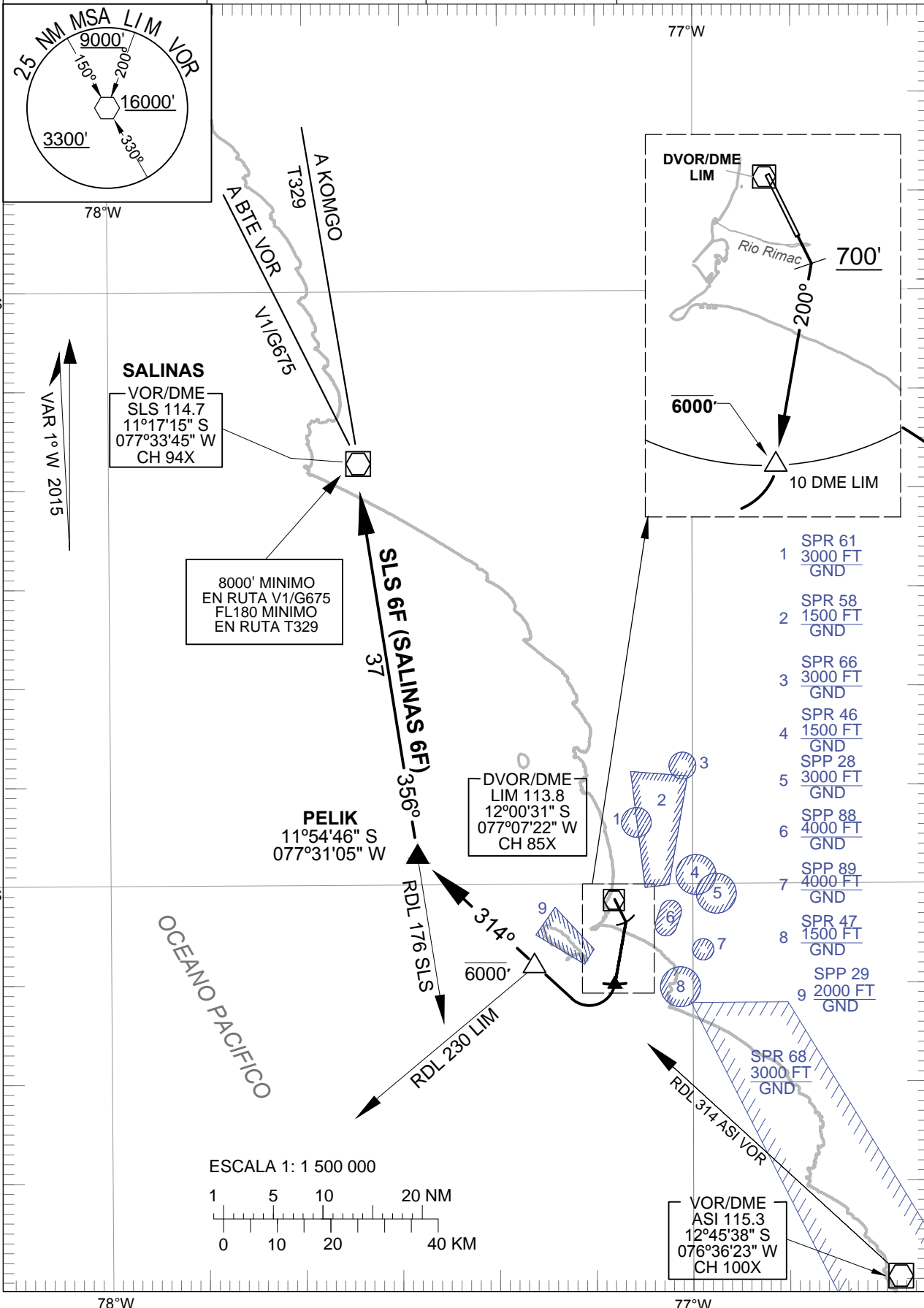


CARTA DE SALIDA NORMALIZADA
VUELO POR INSTRUMENTOS
(SID) - OACI

LIMA - PERU
INTL JORGE CHAVEZ
RWY 15
SLS 6F (SALINAS 6F)

ATIS 127.9	Lima Radar 119.7	Nor-uno Radar 119.5	ALTITUD DE TRANSICION 10000'
TWR 118.1		Nor-dos Radar 128.1	



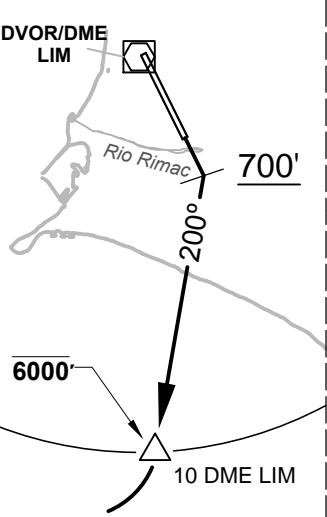
VAR 1° W 2015

SALINAS
VOR/DME
SLS 114.7
11°17'15" S
077°33'45" W
CH 94X

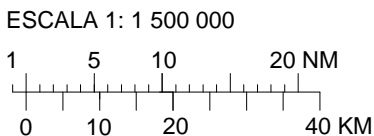
8000' MINIMO
EN RUTA V1/G675
FL180 MINIMO
EN RUTA T329

PELIK
11°54'46" S
077°31'05" W

DVOR/DME
LIM 113.8
12°00'31" S
077°07'22" W
CH 85X



- 1 SPR 61 3000 FT GND
- 2 SPR 58 1500 FT GND
- 3 SPR 66 3000 FT GND
- 4 SPR 46 1500 FT GND
- 5 SPP 28 3000 FT GND
- 6 SPP 88 4000 FT GND
- 7 SPP 89 4000 FT GND
- 8 SPR 47 1500 FT GND
- 9 SPP 29 2000 FT GND



CAMBIOS: Altitud de transición / indicador de AD