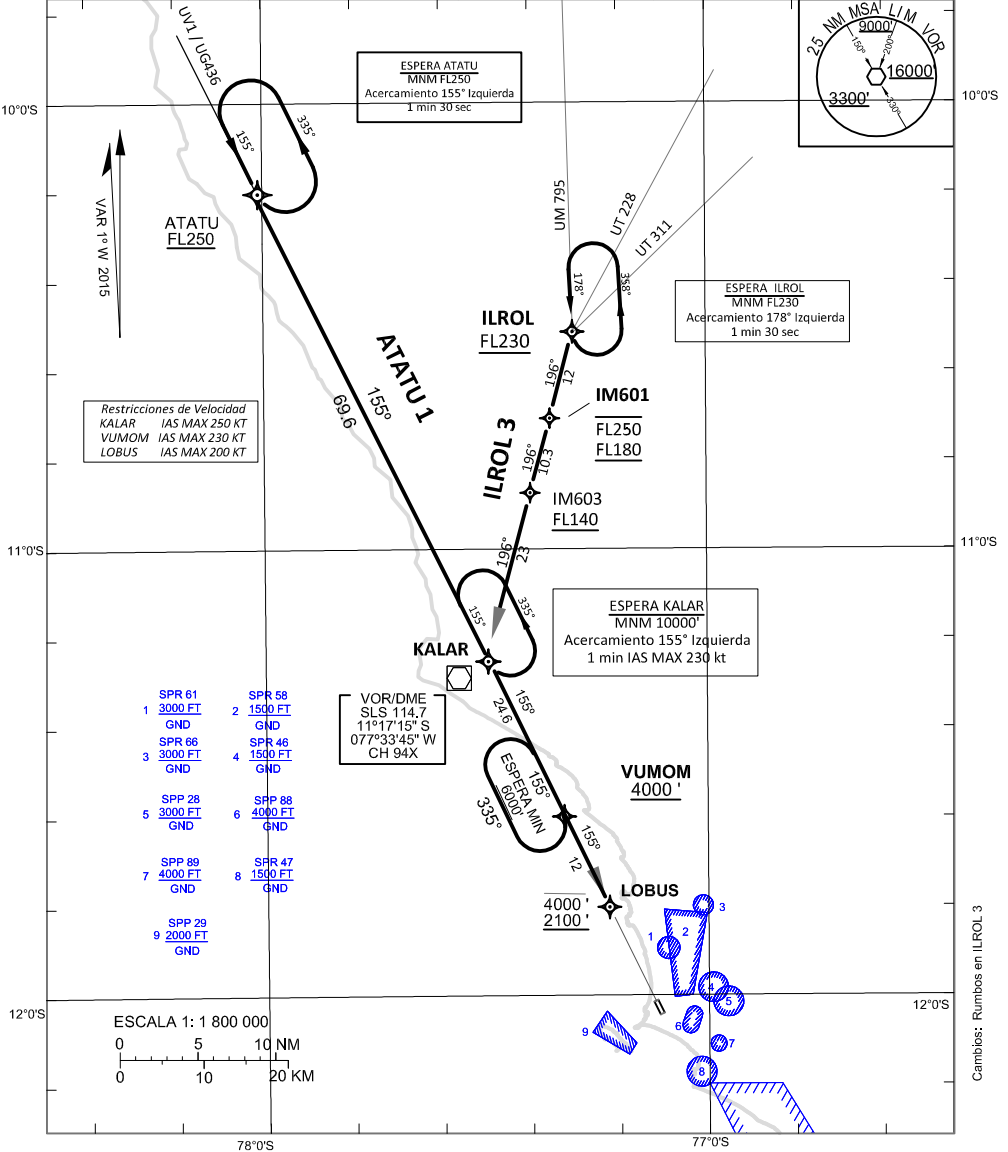


RNAV ATATU 1 - RNAV ILROL 3

ATIS: 127.9	Lima Radar: 119.7	Sur-uno radar: 135.0	ALTITUD DE TRANSICION: 10000'
TWR: 118.1		Sur-dos radar: 128.8	



Restricciones de Velocidad
KALAR IAS MAX 250 KT
VUMOM IAS MAX 230 KT
LOBUS IAS MAX 200 KT

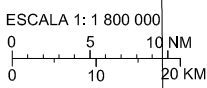
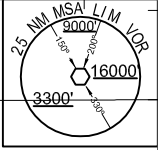
ESPERA ATATU
MNM FL250
Acercamiento 155° Izquierda
1 min 30 sec

ESPERA ILROL
MNM FL230
Acercamiento 178° Izquierda
1 min 30 sec

ESPERA KALAR
MNM 10000'
Acercamiento 155° Izquierda
1 min IAS MAX 230 kt

VOR/DME
SLS 114.7
11°17'15" S
077°33'45" W
CH 94X

- | | |
|-----------|-----------|
| SPR 61 | SPR 58 |
| 1 3000 FT | 2 1500 FT |
| GND | GND |
| SPR 66 | SPR 46 |
| 3 3000 FT | 4 1500 FT |
| GND | GND |
| SPP 26 | SPP 88 |
| 5 3000 FT | 6 4000 FT |
| GND | GND |
| SPP 89 | SPP 47 |
| 7 4000 FT | 8 1500 FT |
| GND | GND |
| SPP 29 | |
| 9 2000 FT | |
| GND | |



Cambios: Rumbos en ILROL 3