

CARTA DE SALIDA NORMALIZADA
VUELO POR INSTRUMENTOS
(SID)

AD Elev. 10860'	Altitud de Transición 18000'	TWR CUSCO TORRE 118.1	APP CUSCO APROXIMACION 120.6	AUTHORIZATION REQUIRED
---------------------------	--	---------------------------------	--	-------------------------------

FMS:
- Deselect **URC** and **ZCO VOR**

TAUJA THREE
RNAV (RNP) DEPARTURE
(TAUJA3.GAXUN)
RNP 0.30
(RWY 10)

This Departure requires a
1000' ceiling and
5000M visibility

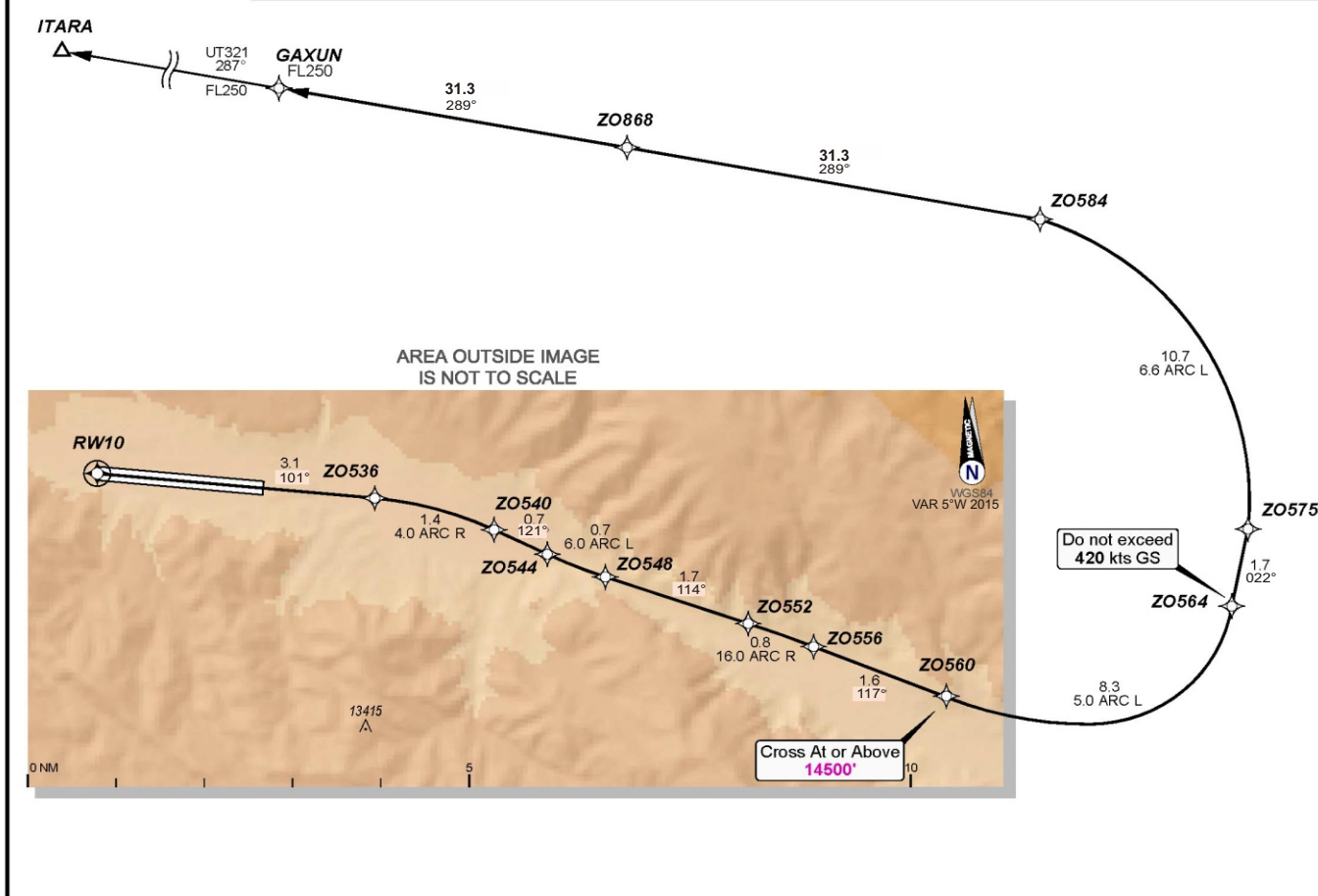
TAKE-OFF:
RWY 10: Fly the RNAV (RNP) track to **ZO560**
thence via:
GAXUN transition:
Cross **ZO560** at or above **14500'**;
Requires Climb Gradient of **470'/NM**

21000'
(6400M)
MSA ARP 25 NM

REQUIRED EQUIPMENT:

- (2) FMGC
- (2) MCDU
- (2) FD
- (2) AP
- (4) EFIS DU
- (2) L/DEV
- (1) RNP P/B (if installed)
- (2) GPS
- (2) IRS
- (2) FCU
- EGPWS

- Procedure N/A above a reported surface temperature of 26°C.



Change: Incorporación de SUP 30 / 16