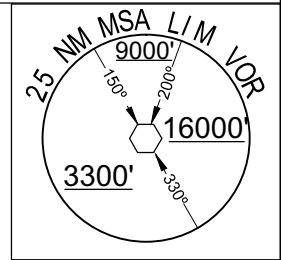


CARTA DE SALIDA NORMALIZADA
VUELO POR INSTRUMENTOS
(SID) - OACI

LIMA - PERU
INTL JORGE CHAVEZ
RWY 15
RNAV ISREN 1F
RNAV ATATU 1F

ATIS	127.9	Lima radar	119.7	ALTITUD DE TRANSICION: 10000'
TWR	118.1	Nor-uno radar	119.5	
		Nor-dos radar	128.1	



A rutas
UL308/UL312/UL344
UL780

A rutas
UM674/UV1

ISREN
FL250

ATATU
FL250

333°
91.3
ISREN 1F

358°
51.7
ATATU 1F

IM917

NO SE AJUSTA A ESCALA

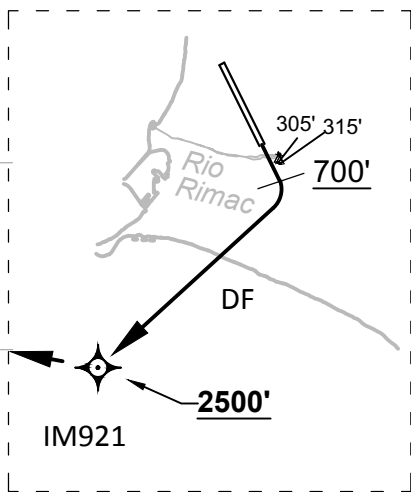
VAR 1° W 2015

11° 30'S

11° 30'S

BURVO

333°
37.6
ATATU 1F/ISREN 1F

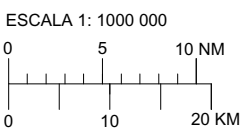


DVOR/DME
LIM 113.8
12°00'31" S
077°07'22" W
CH 85X

12° 00'S

12° 00'S

IM921



PELIK

333°
19.7
ATATU 1F/ISREN 1F

SPP 29
2000 FT
GND

CA

IM923 6000'

282°
IM921

78°W

77°30' W

77°W

CAMBIOS: Cancelación de ruta UG436